

SUPRA COLLECTION

Two-story floorplans offering
Two Bedroom, Two Bath; Two Bedroom, Two 1/2 Bath; and Three
Bedroom Two 1/2 Bath, ranging from approximately
1,357 to 1,671 A/C sq. ft.

GROUND FLOOR

SONOMA

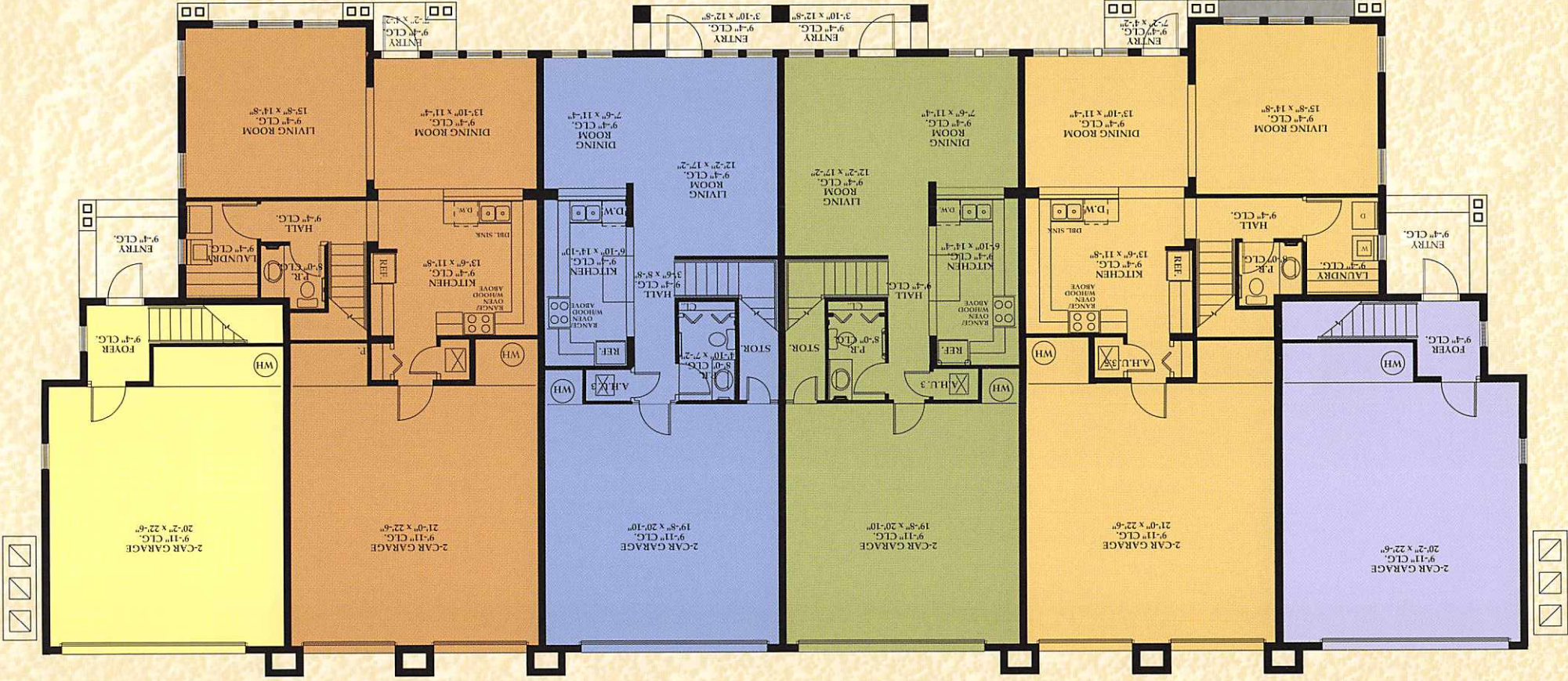
CLAREMONT

NAPA

BALBOA

MILBRAE

MARIN

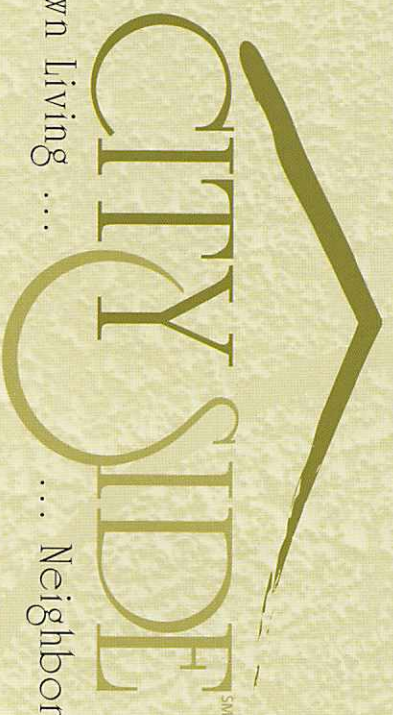


BALBOA
A/C Sq. Ft. 1,425
Total Sq. Ft. 1,929
All square footages are approximate.

MILBRAE
A/C Sq. Ft. 1,671
Total Sq. Ft. 2,294
All square footages are approximate.

MARIN
A/C Sq. Ft. 1,357
Total Sq. Ft. 1,967
All square footages are approximate.

THE SIERRA COLLECTION



Downtown living ...

... Neighborhood style.

NAPA

A/C Sq. Ft. 1,425

Total Sq. Ft. 1,929

All square footages are approximate.

CLAREMONT

A/C Sq. Ft. 1,671

Total Sq. Ft. 2,294

All square footages are approximate.

SONOMA

A/C Sq. Ft. 1,357

Total Sq. Ft. 1,967

All square footages are approximate.

MARIN

SECOND FLOOR

SONOMA



BALBOA

NAPA

MILLBRAE

CLAREMONT

THESE FLOORPLANS ARE CONCEPTUAL ONLY AND FOR THE CONVENIENCE OF REFERENCE. THEY SHOULD NOT BE RELIED UPON AS REPRESENTATION EXPRESS OR IMPLIED, OF THE FINAL DETAIL, FEATURES OR DIMENSIONS OF ANY UNIT OR RESIDENCE. THE DEVELOPER EXPRESSLY RESERVES THE RIGHT TO MAKE ANY MODIFICATIONS, REVISIONS, AND CHANGES IT DEEMS APPROPRIATE OR DESIRABLE IN ITS SOLE AND ABSOLUTE DISCRETION OR AS MAY BE REQUIRED BY LAW OR GOVERNMENTAL BODIES. DIMENSIONS AND SQUARE FOOTAGES ARE APPROXIMATE AND MAY VARY WITH ACTUAL CONSTRUCTION.

ORAL REPRESENTATIONS CANNOT BE RELIED UPON AS CORRECTLY STATING REPRESENTATIONS OF THE DEVELOPER. FOR CORRECT REPRESENTATIONS, MAKE REFERENCE TO THIS BROCHURE AND TO THE DOCUMENTS REQUIRED BY SECTION 718.503, FLORIDA STATUTES, TO BE FURNISHED BY A DEVELOPER TO A BUYER OR LESSEE.

FEATURES & SPECIFICATIONS

EXTERIOR DETAILS

- * Craftsman-style architectural theme
- * Fiberglass composite architectural roof shingles
- * Raised, covered entry with 8' door on select units
- * Weatherproof electrical outlets (per plan)
- * Hurricane-rated garage doors
- * Automatic garage door opener with remotes (1 or 2 per plan)
- * Impact glass on all windows per plan
- * Electrostatic-plated aluminum window frames with screening
- * Steel-reinforced and Termite-treated concrete foundations
- * Coach lights at garage
- * Tinted Glass
- * Architecturally designed exterior elevations
- * Designer exterior paint color schemes
- * Textured stucco exterior

TELEPHONE & CABLE FOR YOUR HOME

- * Structured wiring
- * Pre-wired for phone in Kitchen, all Bedrooms and Family room
- * Pre-wired for cable TV in family room and all bedrooms

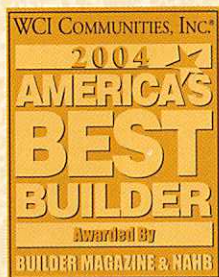
QUALITY INTERIOR DETAILS

- * Designer ceramic 16"x16" tile floors in Foyer, Kitchen, Powder Room and Laundry Room
- * Energy efficient Formaldehyde-free R-30 ceiling insulation
- * Knockdown textured ceilings & walls (except bathroom walls)
- * Zoned security system with backlit alphanumeric keypad
- * Designer wall-to-wall carpeting in all Bedrooms, Dining Room and Living Room
- * Pre-wired for ceiling fans in Living Room, Family Room and all Bedrooms per plan
- * High-efficiency central air-conditioning and heating unit
- * Custom lighting details
- * Colonist-panel interior doors with Schlage designer lever hardware
- * Decorative wood door trim and baseboards
- * Raised-panel closet doors (per plan)
- * Decora rocker-style electrical switches
- * Marble windowsills



Downtown Living ... Neighborhood Style.

1700 PALM BEACH LAKES BLVD., SUITE 580
WEST PALM BEACH, FL 33401
(561) 687-3808 • WWW.CITYSIDEWPB.COM



COMMUNITIES FINANCE COMPANY, LLC, ("CFC") IS THE DEVELOPER AND OWNER OF CITYSIDE. CFC IS A WHOLLY OWNED SUBSIDIARY OF BAY COLONY - GATEWAY, INC., WHICH IS A WHOLLY OWNED SUBSIDIARY OF WCI COMMUNITIES, INC. ("WCI"). CFC HAS ENGAGED WCI TO CONSTRUCT THE HOMES AND CERTAIN OTHER IMPROVEMENTS LOCATED WITHIN CITYSIDE. WCI'S CONTRACTOR LICENSE NUMBER IS QB0000936. CITYSIDE IS A PHASED CONDOMINIUM DEVELOPMENT. DEVELOPER HAS INITIALLY COMMITTED TO CONSTRUCT PHASES 1,2,3 & 4 OF THE CONDOMINIUM COMPRISING BUILDINGS 1A - 11A, 2B - 11B, 1C - 19C. ALL FEATURES, SPECIFICATIONS, PLANS AND DECORATOR ITEMS ARE SUBJECT TO CHANGE WITHOUT NOTICE. DEVELOPER RESERVES THE RIGHT, IN ITS SOLE DISCRETION, TO MAKE MODIFICATIONS TO THE PLANS FEATURES AND SPECIFICATIONS.

THESE DRAWINGS ARE CONCEPTUAL ONLY AND FOR THE CONVENIENCE OF REFERENCE. THEY SHOULD NOT BE RELIED UPON AS REPRESENTATION EXPRESS OR IMPLIED, OF THE FINAL DETAIL, FEATURES OR DIMENSIONS OF ANY UNIT OR RESIDENCE. THE DEVELOPER EXPRESSLY RESERVES THE RIGHT TO MAKE ANY MODIFICATIONS, REVISIONS, AND CHANGES IT DEEMS APPROPRIATE OR DESIRABLE IN ITS SOLE AND ABSOLUTE DISCRETION OR AS MAY BE REQUIRED BY LAW OR GOVERNMENTAL BODIES. ALL FEATURES, SPECIFICATIONS, PLANS AND DECORATOR ITEMS ARE SUBJECT TO CHANGE WITHOUT NOTICE.

VOID WHERE PROHIBITED. PCI 10/04

WCI®

Lifestyles Beyond ExpectationsSM